

*FREE SHIPPING ON ORDERS OVER \$98 (EXCLUSIONS APPLY)



SHOP CATEGORIES

WHY S&B

SHOP BY VEHICLE



0

INSTALL INSTRUCTIONS FOR 83-1006



PRINT

BEFORE YOU START

Kit may not fit with the following Aftermarket Parts installed:

Body Lift or Lowering Kit

Custom Hood

Aftermarket Turbocharger and/or Throttle Body Spacer

- Please read the entire product guide before proceeding.
- Ensure all parts are present.
- If you are missing any of the components, call our customer support at (909) 947-0015.
- Do not work on your vehicle while the engine is hot.
- Make sure the engine is turned off and the vehicle is in Park or the Parking Brake is set.

REQUIRED TOOLS

-Flat Head Screwdriver

-10mm, 11mm, 13mm Socket

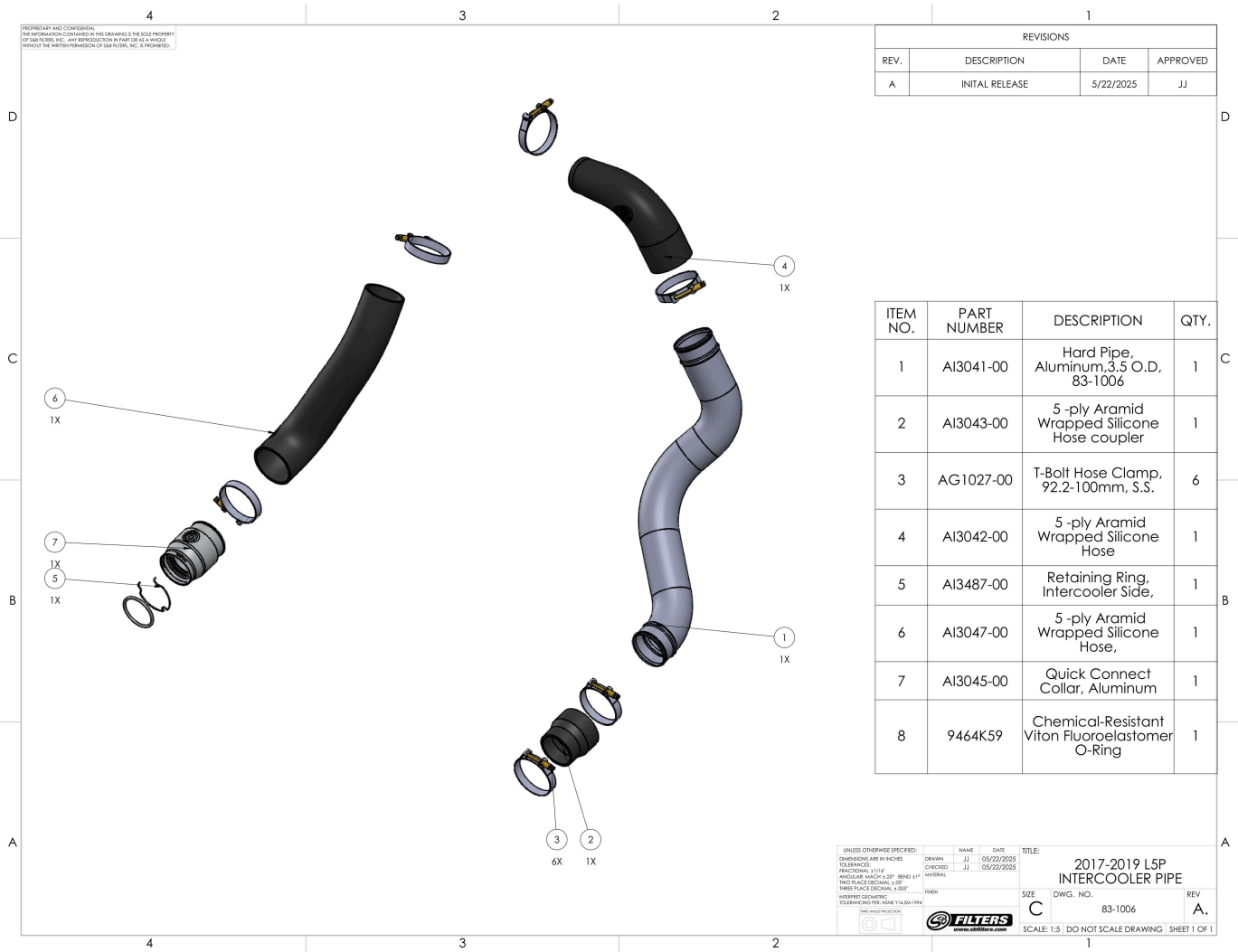
-Ratchet with Various Extensions

-14mm Wrench

-Torque Wrench (in.lbs.)

-Panel Popper

Cookie Preferences



REVISIONS			
REV.	DESCRIPTION	DATE	APPROVED
A	INITIAL RELEASE	5/22/2025	JJ

ITEM NO.	PART NUMBER	DESCRIPTION	QTY.
1	AI3041-00	Hard Pipe, Aluminum, 3.5 O.D., 83-1006	1
2	AI3043-00	5 -ply Aramid Wrapped Silicone Hose coupler	1
3	AG1027-00	T-Bolt Hose Clamp, 92.2-100mm, S.S.	6
4	AI3042-00	5 -ply Aramid Wrapped Silicone Hose	1
5	AI3487-00	Retaining Ring, Intercooler Side,	1
6	AI3047-00	5 -ply Aramid Wrapped Silicone Hose,	1
7	AI3045-00	Quick Connect Collar, Aluminum	1
8	9464K59	Chemical-Resistant Viton Fluoroelastomer O-Ring	1

UNLESS OTHERWISE SPECIFIED: DIMENSIONS ARE IN INCHES TOLERANCES: FRACTIONAL: ±.015 ANGULAR: ±.031 89-043 ±1° THREE PLACE DECIMAL: ±.001

NAME: JJ DATE: 05/22/2025
 DRAWN: JJ CHECKED: JJ
 MATERIAL: 304 SS

TITLE: 2017-2019 LSP INTERCOOLER PIPE
 DWG. NO.: 83-1006
 REV: A

SCALE: 1:5 | DO NOT SCALE DRAWING | SHEET 1 OF 1

FILTERS
www.sbfilters.com

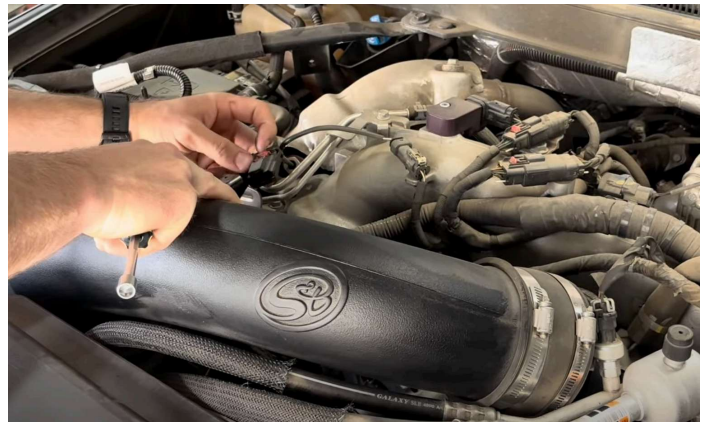
STEP 1: COLD SIDE

Uninstall the *OEM* or *S&B* Air Intake from your vehicle. Use a 7/16th nut driver to loosen the hose clamps connecting the intake tube to the throttle body.

Cookie Preferences

Make sure to disconnect the MAP Sensor as well.

Additionally, you'll need a **10mm** socket to remove the bolts from inside the Air Box.



STEP 2:

Take a **flat head screwdriver** to turn this ring counter-clockwise to gain access to the pipe.

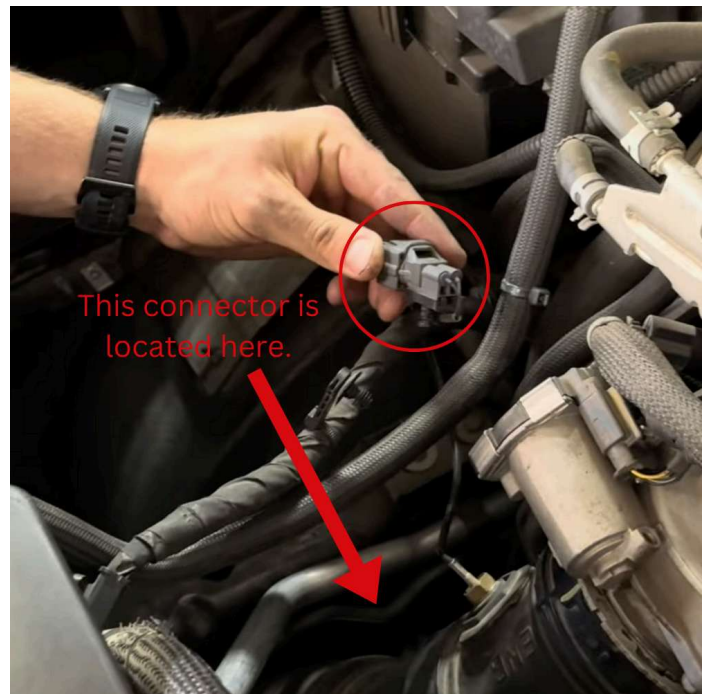


STEP 3:

Remove the bolt holding the stock intercooler pipe. You will need a **13mm** socket to do so.

**STEP 4:**

Now with a **panel popper** tool, go ahead and remove the sensor connector from the stock intercooler pipe. Once done, go ahead and disconnect one side from the other.

**STEP 5:**

Now, it's time to remove the lower retaining ring on the stock cold side intercooler pipe. At the lower end of the pipe, take a **flat head**

screwdriver and wedge it between the pipe and ring in order to release it.



STEP 6:

Now, go ahead and remove the stock cold side intercooler pipe. Push the pipe downward and turn counter-clockwise, then pull the pipe upward.



STEP 7: HOT SIDE

Using an **11mm** socket, go ahead and loosen the stock t-clamp.



STEP 8:

Next, take the **11mm** socket with various **extensions** to loosen the lower t-clamp.



STEP 9:

Now, go ahead and remove the pipe from the vehicle. We recommend doing so from the driver side wheel well. To do so, you will need to remove the liner from the wheel well.



STEP 10:

Now, with the wheel well liner

Cookie Preferences ahead and

remove the hot side intercooler pipe.



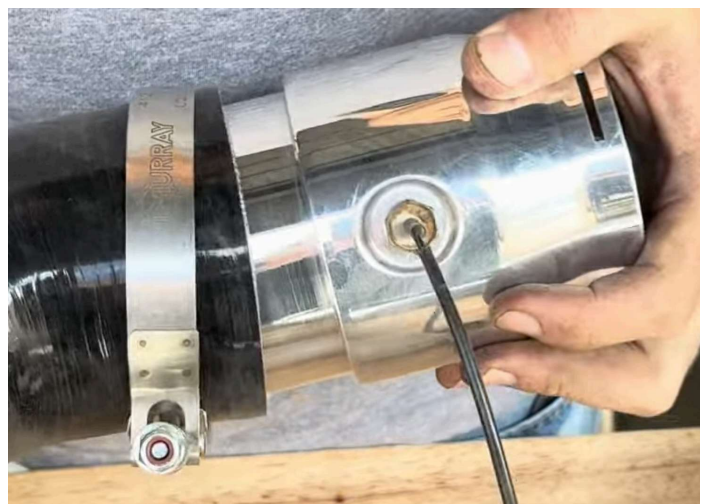
STEP 11: COLD SIDE

Now, with a **14mm** wrench go ahead and remove the stock sensor and transfer it to the S&B cold side pipe.



STEP 12:

If you haven't done so already, go ahead and slide the billet collar onto the silicone hose.



STEP 13:

Install the provided seal into the billet collar O-ring groove.



STEP 14:

Install the included S&B snap ring onto the billet collar.



STEP 15:

Torque down this t-clamp to 76 inch lbs. using an **11mm** socket.

STEP 16:

Install the *cold side* pipe. We recommend getting it into position first, then install the lower side from under the vehicle. Then install the high side onto the throttle body.

Once done, using an **11mm** socket, go ahead and torque the t-bolts down to 76 inch lbs. and ensure that the clamps are right on the end of the pipe.

STEP 17: HOT SIDE

Cookie Preferences

Next, install the *hot side* pipe. You can feed the pipe from the top and down. Once done, go ahead and align the pipes silicone boots.

STEP 18:

Go ahead and install the (2) upper T-clamps onto the boot.

*Don't tighten these down yet.

STEP 19:

Now take the step-down coupler with a T-clamp and mount it to the low side of the intercooler. Then install the pipe onto the low side.
*But don't fully tighten down the clamp just yet.

STEP 20:

Now, using an **11mm** socket, go ahead and torque the (3) T-clamps down on the hot side intercooler pipe to 76 inch lbs.

STEP 21:

Now it's time to reconnect the sensor. (**refer to step 4**)

STEP 22:

Re-install the air intake and the driver side fender lining.

Please verify that all connections points are secure and tight.

Your installation is now complete.

Cookie Preferences